

**Illustrations from the tunnel construction video** 6 February 2012

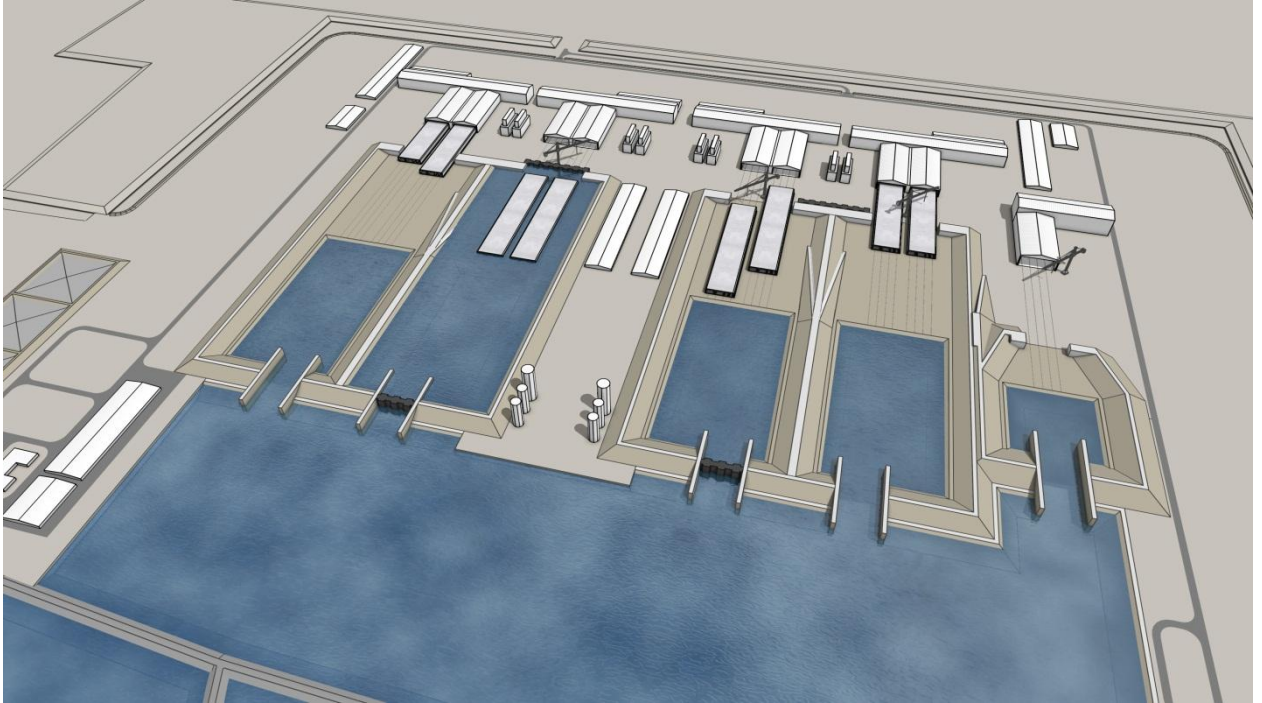


Illustration 1

79 tunnel elements will be produced in a factory east of Rødbyhavn using an industrialized process.

The factory's facilities include production halls, docks and a working harbour.

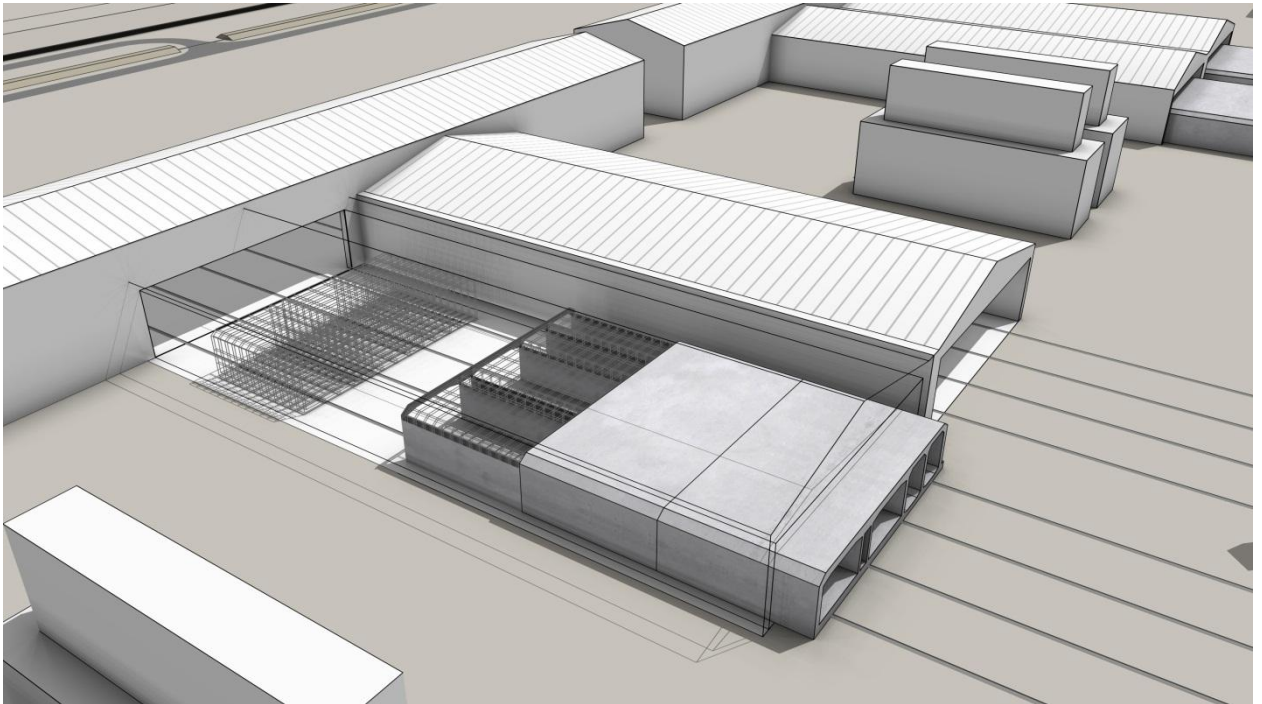


Illustration 2

Indoor casting halls will make production of tunnel elements independent of weather conditions. In a continuous process nine identical segments will be joined together to create a complete element. It takes nine weeks to cast one element.

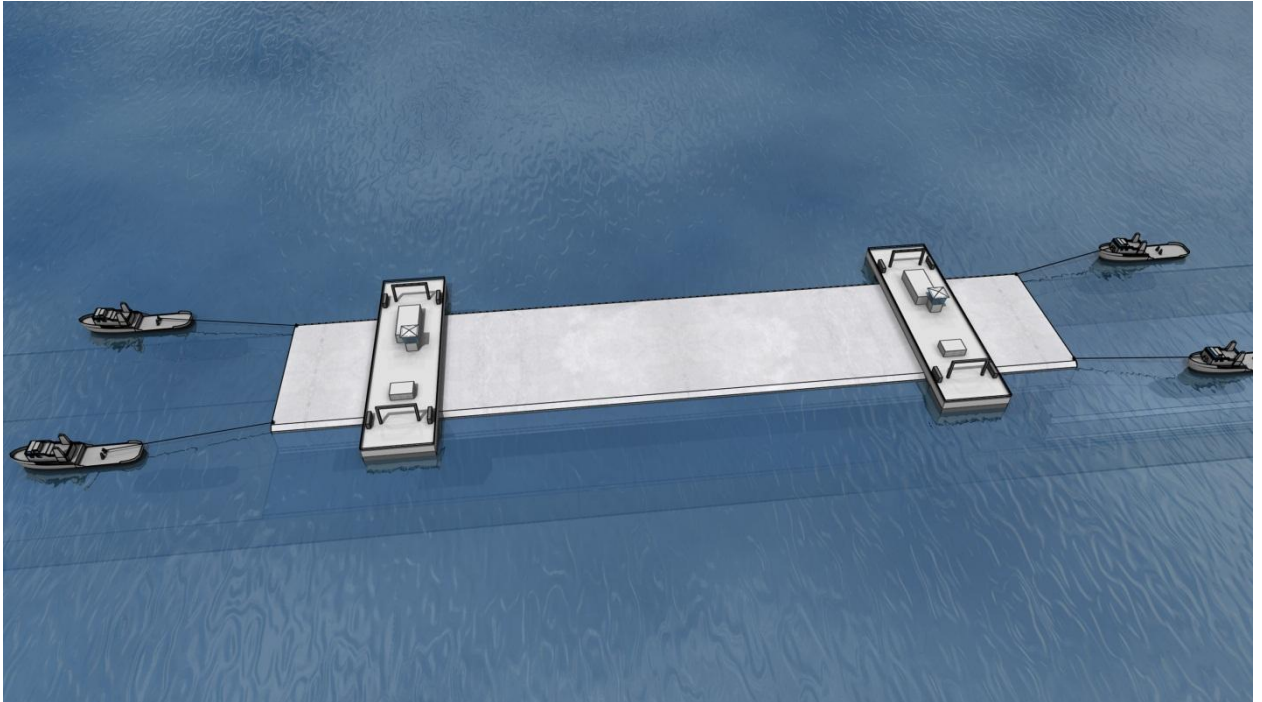


Illustration 3

Watertight bulkheads have been mounted at both ends of the element and the element is towed to a holding area near the location where it will be immersed. Prior to immersion the tunnel element is hooked up to floating pontoons.

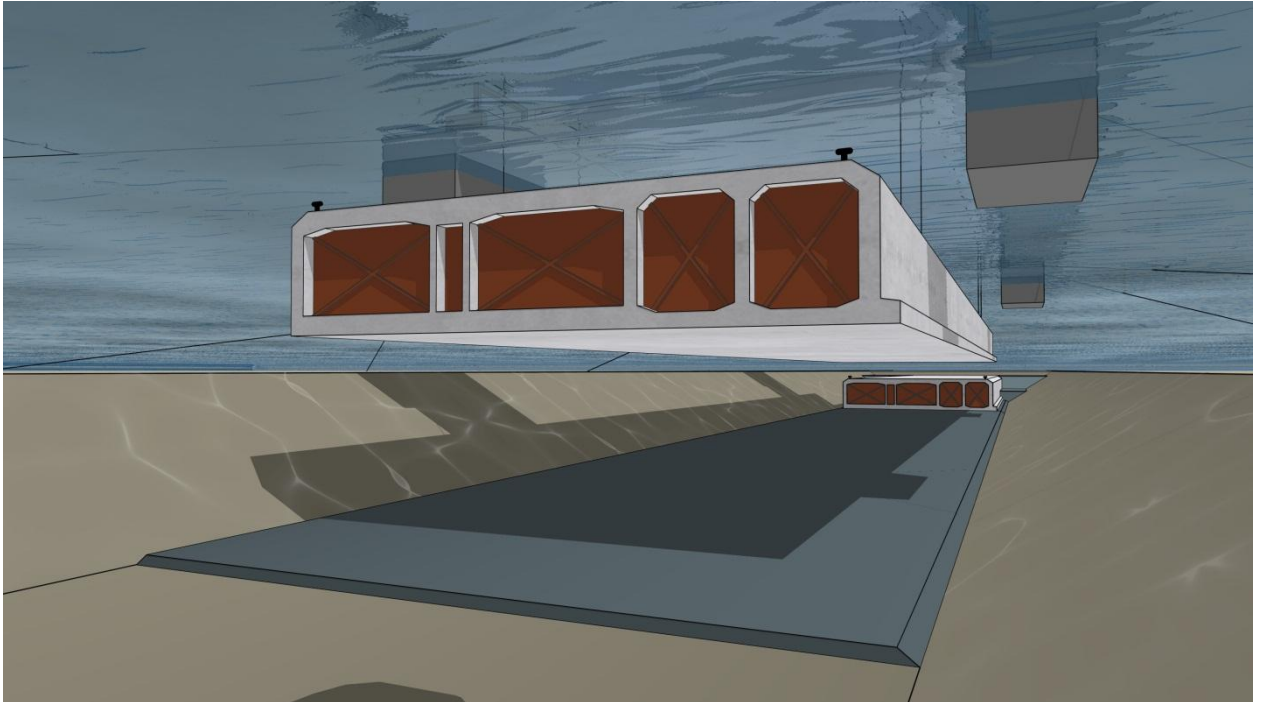


Illustration 4

The tunnel element is lowered into a trench that on beforehand had been excavated. Ballast tanks that have been previously fitted to the element are gradually filled with water to sink it. As the element slowly sinks, its movements are controlled by mooring wires.

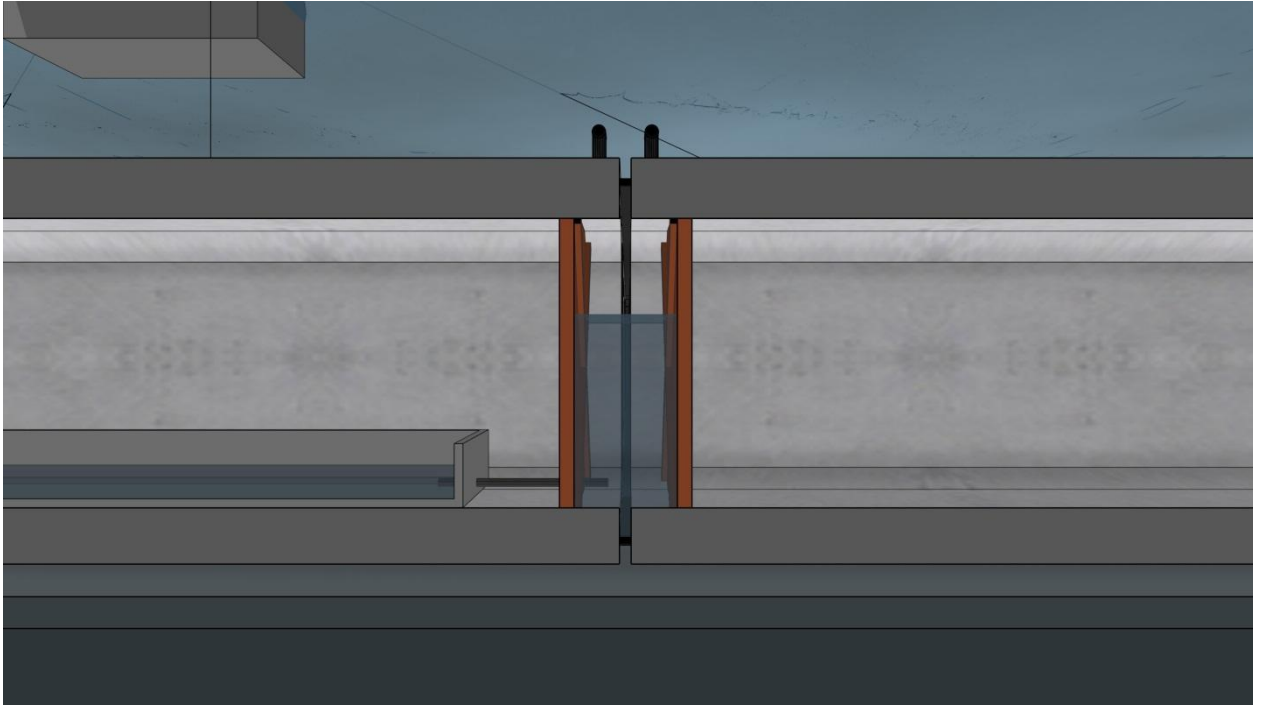


Illustration 5

The new tunnel element is connected to the prior element. Next water is pumped out between the bulkheads and the water pressure on the opposite free end of the element will force the elements closer together, creating a watertight seal.